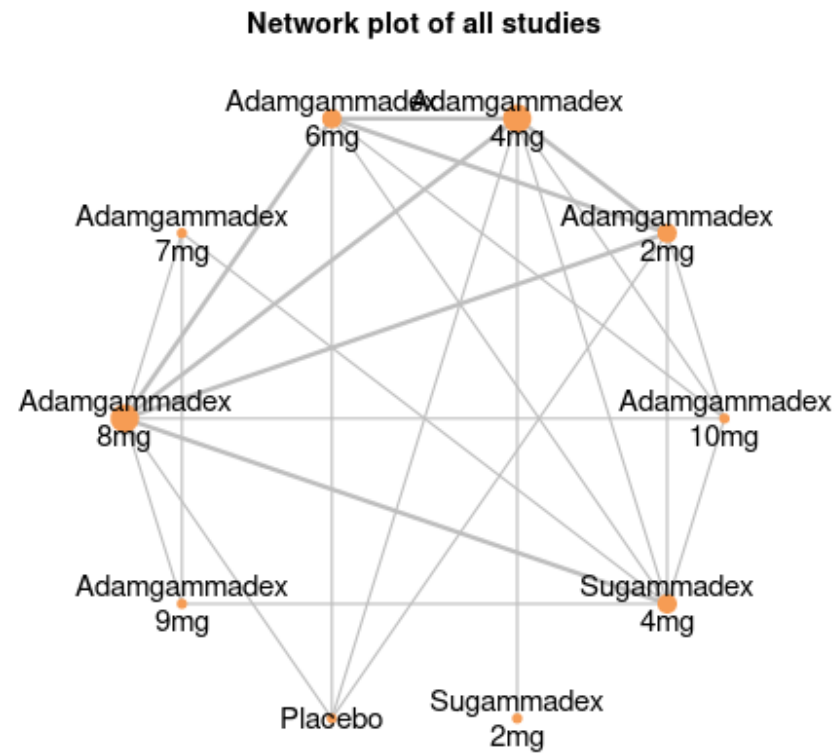
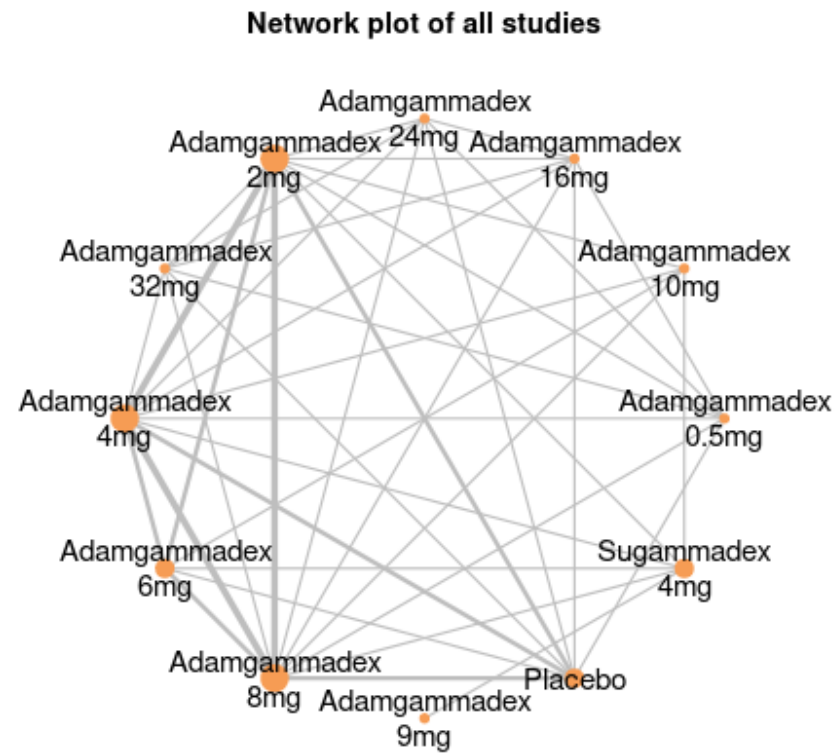


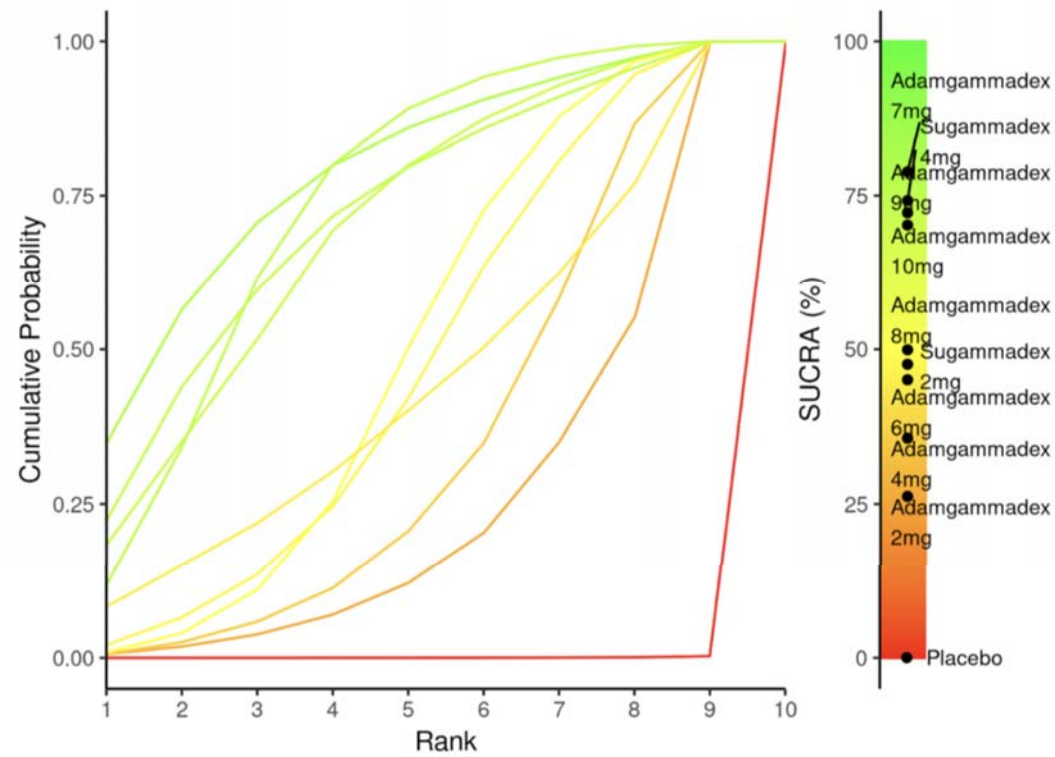
Supplementary Figure 1. Prisma.



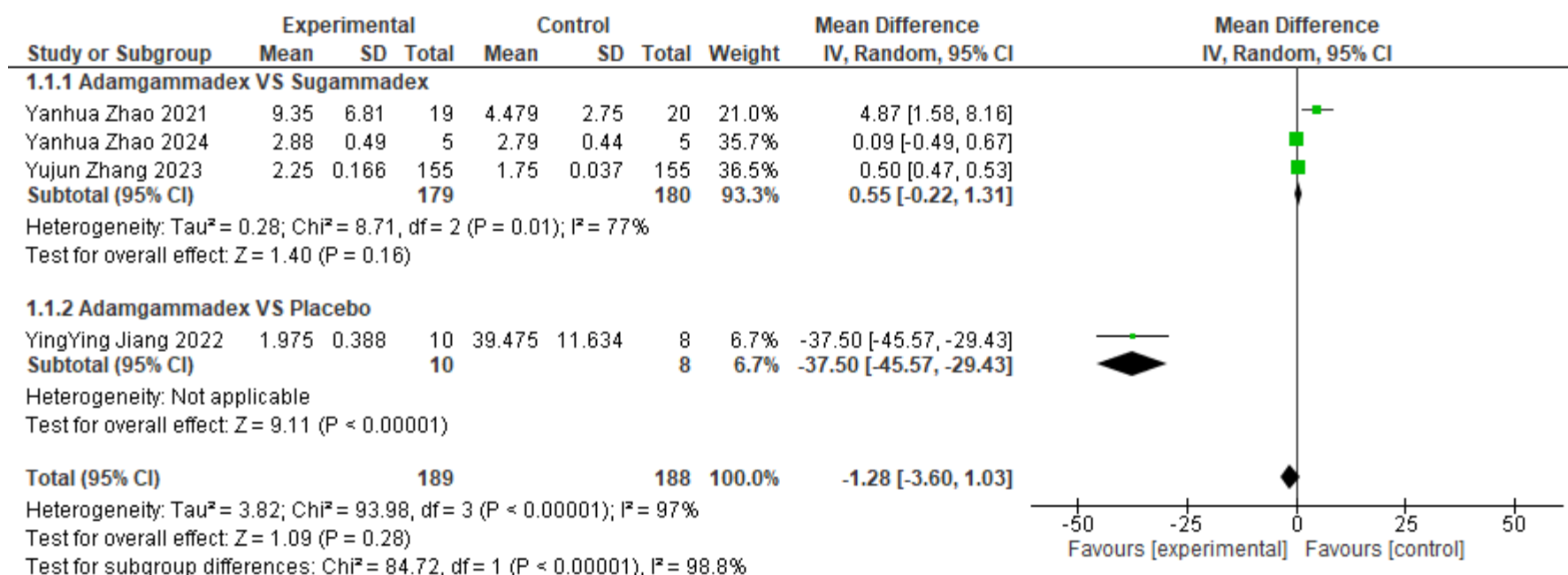
Supplementary Figure 2. Network plot of all studies reporting ToF 0.9.



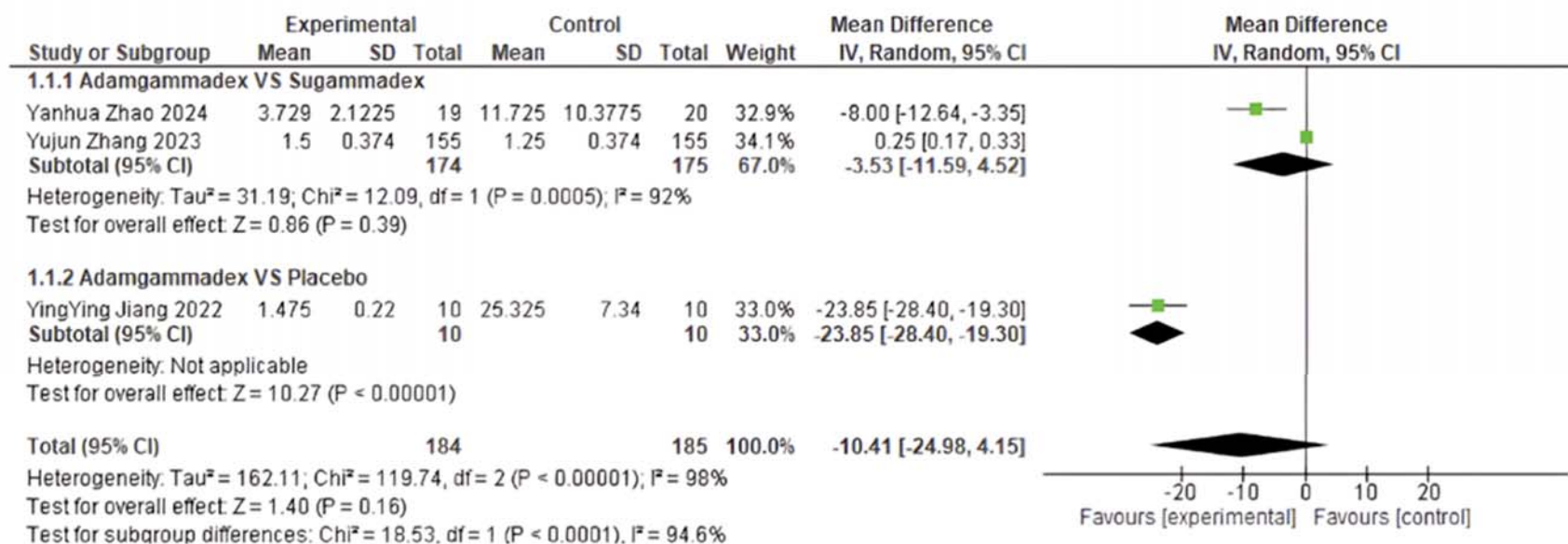
Supplementary Figure 3. Network plot of all studies reporting Adverse events.



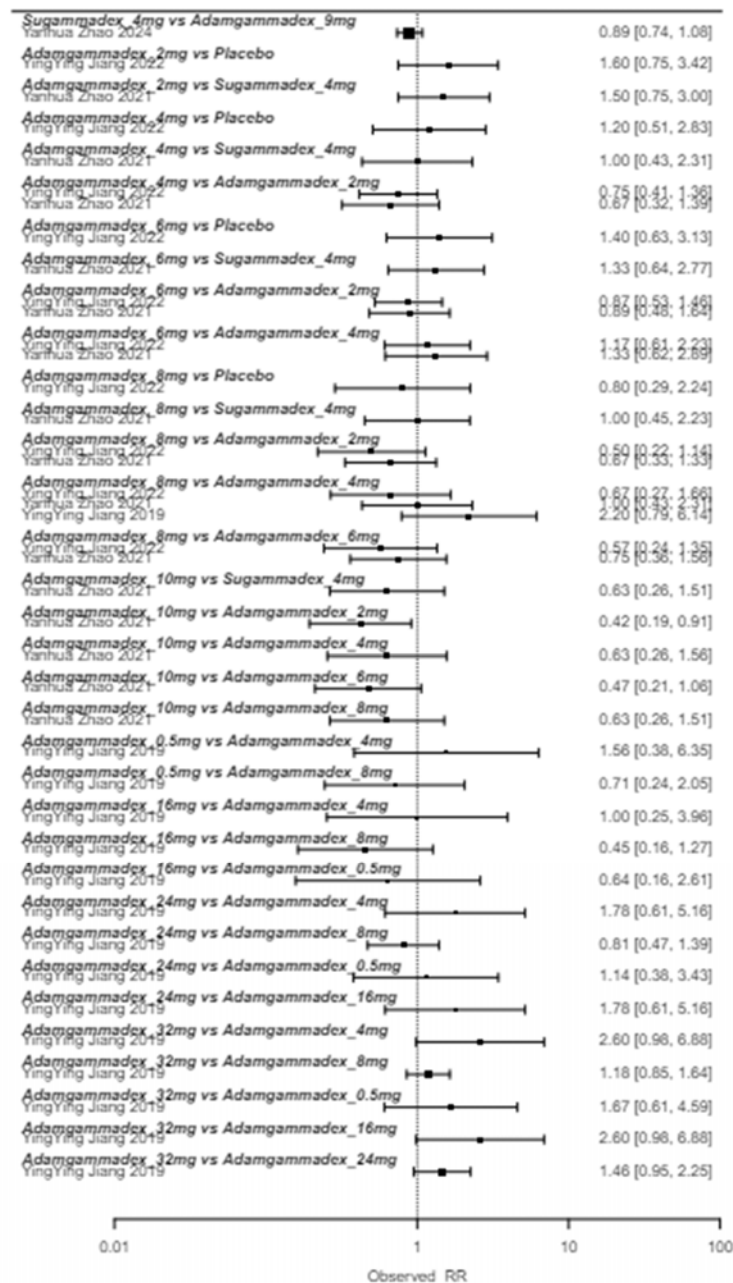
Supplementary Figure 4. Cumulative ranking of ToF 0.9.



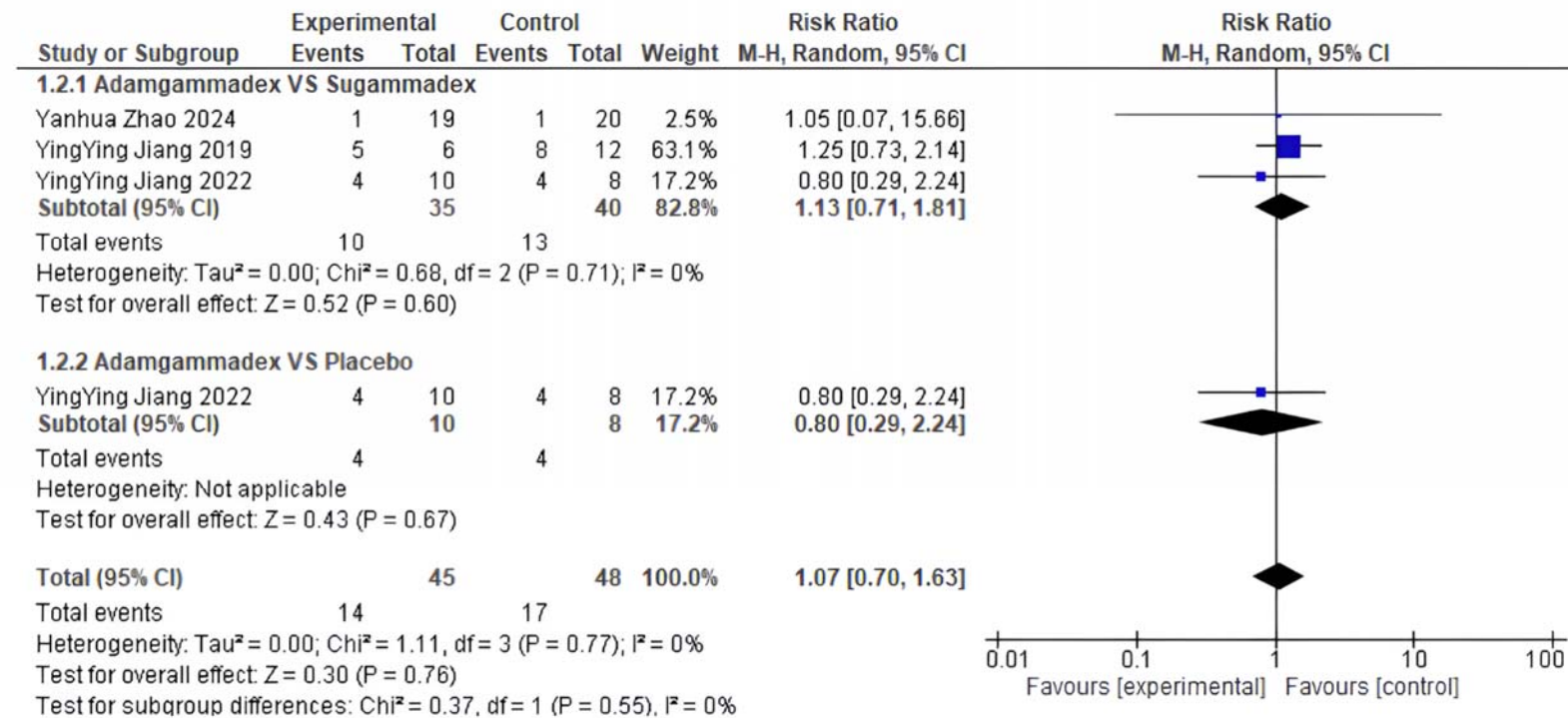
Supplementary Figure 5. Direct pairwise meta-analysis of ToF 0.9.



Supplementary Figure 6. Forest plot of ToF 0.7.



Supplementary Figure 7. Individual study results for adverse events.



Supplementary Figure 8. Direct pairwise meta analysis adverse events.

Supplementary Table 1. Summary characteristics of all studies reporting ToF 0.9.

Characteristics table of all studies

Characteristic	Value
Number of Interventions	10
Number of Studies	4
Total Number of Patients in Network	464
Total Possible Pairwise Comparisons	45
Total Number of Pairwise Comparisons With Direct Data	25
Is the network connected?	TRUE
Number of Two-arm Studies	1
Number of Multi-Arms Studies	3
Average Outcome	3.498

Supplementary Table 2. Ranking ToF 0.9.

Adamgammadex_7mg	0.06 [-2.39; 2.52]	.	-0.68 [-3.22; 1.86]	-4.81 [-8.54; -1.07]
-0.75 [-3.09; 1.59]	Sugammadex_4mg	0.44 [-1.61; 2.49]	-0.75 [-3.36; 1.87]	-1.10 [-2.84; 0.64]	.	-0.88 [-2.89; 1.13]	-5.32 [-11.64; 1.00]	-10.52 [-21.32; 0.28]	.
-0.80 [-3.75; 2.16]	-0.04 [-2.04; 1.95]	Adamgammadex_10mg	.	-0.53 [-2.59; 1.53]	.	-1.32 [-3.42; 0.78]	-5.76 [-12.11; 0.59]	-10.96 [-21.77; -0.15]	.
-0.68 [-3.22; 1.86]	0.07 [-2.43; 2.57]	0.11 [-2.98; 3.20]	Adamgammadex_9mg	-4.12 [-7.97; -0.28]
-1.97 [-4.61; 0.66]	-1.22 [-2.86; 0.42]	-1.18 [-3.07; 0.72]	-1.29 [-4.07; 1.49]	Adamgammadex_8mg	.	-0.59 [-1.98; 0.81]	-0.70 [-2.54; 1.15]	-1.40 [-3.35; 0.54]	-37.50 [-45.78; -29.22]
-2.09 [-5.68; 1.50]	-1.34 [-4.25; 1.57]	-1.29 [-4.33; 1.74]	-1.41 [-5.11; 2.29]	-0.12 [-2.69; 2.45]	Sugammadex_2mg	.	-0.50 [-2.37; 1.37]	.	.
-2.33 [-5.10; 0.45]	-1.57 [-3.33; 0.19]	-1.53 [-3.48; 0.42]	-1.64 [-4.56; 1.27]	-0.35 [-1.73; 1.03]	-0.24 [-2.82; 2.35]	Adamgammadex_6mg	-0.27 [-2.15; 1.60]	-1.00 [-2.97; 0.98]	-37.10 [-45.39; -28.81]
-2.59 [-5.65; 0.47]	-1.84 [-4.06; 0.38]	-1.79 [-4.19; 0.60]	-1.91 [-5.10; 1.28]	-0.62 [-2.37; 1.14]	-0.50 [-2.37; 1.37]	-0.26 [-2.04; 1.51]	Adamgammadex_4mg	-0.94 [-2.91; 1.04]	-37.23 [-45.51; -28.94]
-3.37 [-6.49; -0.25]	-2.62 [-4.92; -0.32]	-2.57 [-5.04; -0.11]	-2.69 [-5.93; 0.55]	-1.40 [-3.24; 0.44]	-1.28 [-4.00; 1.44]	-1.04 [-2.90; 0.81]	-0.78 [-2.75; 1.19]	Adamgammadex_2mg	-36.40 [-44.70; -28.10]
-39.62 [-48.24; -30.99]	-38.86 [-47.23; -30.50]	-38.82 [-47.23; -30.40]	-38.93 [-47.61; -30.26]	-37.64 [-45.90; -29.39]	-37.53 [-46.02; -29.04]	-37.29 [-45.55; -29.03]	-37.03 [-45.31; -28.75]	-36.25 [-44.54; -27.95]	Placebo

Supplementary Table 3. Ranking Adverse events.

Adamgammadex_16mg	.	0.64 [0.16; 2.61]	0.56 [0.19; 1.63]	1.00 [0.25; 3.96]	.	.	0.45 [0.16; 1.27]	.	.	0.38 [0.15; 1.02]	.
0.80 [0.22; 2.90]	Adamgammadex_10mg	.	.	0.63 [0.26; 1.56]	.	0.63 [0.26; 1.51]	0.63 [0.26; 1.51]	.	0.47 [0.21; 1.06]	.	0.42 [0.19; 0.91]
0.64 [0.16; 2.61]	0.80 [0.21; 2.96]	Adamgammadex_0.5mg	0.88 [0.29; 2.64]	1.56 [0.38; 6.35]	.	.	0.71 [0.24; 2.05]	.	.	0.60 [0.22; 1.65]	.
0.56 [0.19; 1.63]	0.70 [0.27; 1.79]	0.88 [0.29; 2.64]	Adamgammadex_24mg	1.78 [0.61; 5.16]	.	.	0.81 [0.47; 1.39]	.	.	0.68 [0.44; 1.05]	.
0.53 [0.17; 1.61]	0.65 [0.30; 1.43]	0.82 [0.26; 2.61]	0.93 [0.46; 1.90]	Adamgammadex_4mg	1.20 [0.51; 2.83]	1.00 [0.43; 2.31]	0.93 [0.55; 1.58]	.	0.81 [0.49; 1.33]	0.38 [0.15; 1.02]	0.72 [0.45; 1.14]
0.54 [0.15; 2.00]	0.67 [0.24; 1.85]	0.84 [0.22; 3.21]	0.96 [0.36; 2.55]	1.03 [0.48; 2.29]	Placebo	.	1.25 [0.45; 3.49]	.	0.71 [0.32; 1.59]	.	0.62 [0.29; 1.34]
0.51 [0.15; 1.75]	0.63 [0.26; 1.51]	0.79 [0.22; 2.81]	0.90 [0.38; 2.17]	0.97 [0.48; 1.95]	0.94 [0.36; 2.43]	Sugammadex_4mg	1.00 [0.45; 2.23]	0.89 [0.74; 1.08]	0.75 [0.38; 1.56]	.	0.67 [0.33; 1.33]
0.49 [0.18; 1.36]	0.61 [0.27; 1.35]	0.76 [0.26; 2.20]	0.87 [0.51; 1.49]	0.93 [0.55; 1.57]	0.90 [0.39; 2.08]	0.96 [0.47; 1.97]	Adamgammadex_8mg	.	0.67 [0.38; 1.17]	0.85 [0.61; 1.17]	0.59 [0.35; 1.00]
0.45 [0.13; 1.58]	0.56 [0.23; 1.37]	0.71 [0.20; 2.55]	0.81 [0.33; 1.98]	0.86 [0.42; 1.79]	0.84 [0.32; 2.21]	0.89 [0.74; 1.08]	0.93 [0.44; 1.94]	Adamgammadex_9mg	.	.	.
0.38 [0.12; 1.19]	0.48 [0.23; 1.01]	0.60 [0.19; 1.93]	0.68 [0.33; 1.41]	0.73 [0.45; 1.18]	0.71 [0.33; 1.53]	0.76 [0.39; 1.48]	0.79 [0.47; 1.32]	0.85 [0.42; 1.70]	Adamgammadex_6mg	.	0.88 [0.60; 1.30]
0.38 [0.15; 1.02]	0.48 [0.21; 1.10]	0.60 [0.22; 1.65]	0.68 [0.44; 1.05]	0.73 [0.42; 1.28]	0.71 [0.30; 1.70]	0.76 [0.35; 1.62]	0.79 [0.57; 1.08]	0.85 [0.39; 1.86]	1.00 [0.56; 1.79]	Adamgammadex_32mg	.
0.34 [0.11; 1.04]	0.42 [0.20; 0.88]	0.53 [0.17; 1.67]	0.60 [0.30; 1.22]	0.64 [0.41; 1.00]	0.63 [0.30; 1.32]	0.67 [0.35; 1.28]	0.69 [0.42; 1.13]	0.75 [0.38; 1.47]	0.88 [0.60; 1.30]	0.88 [0.50; 1.53]	Adamgammadex_2mg